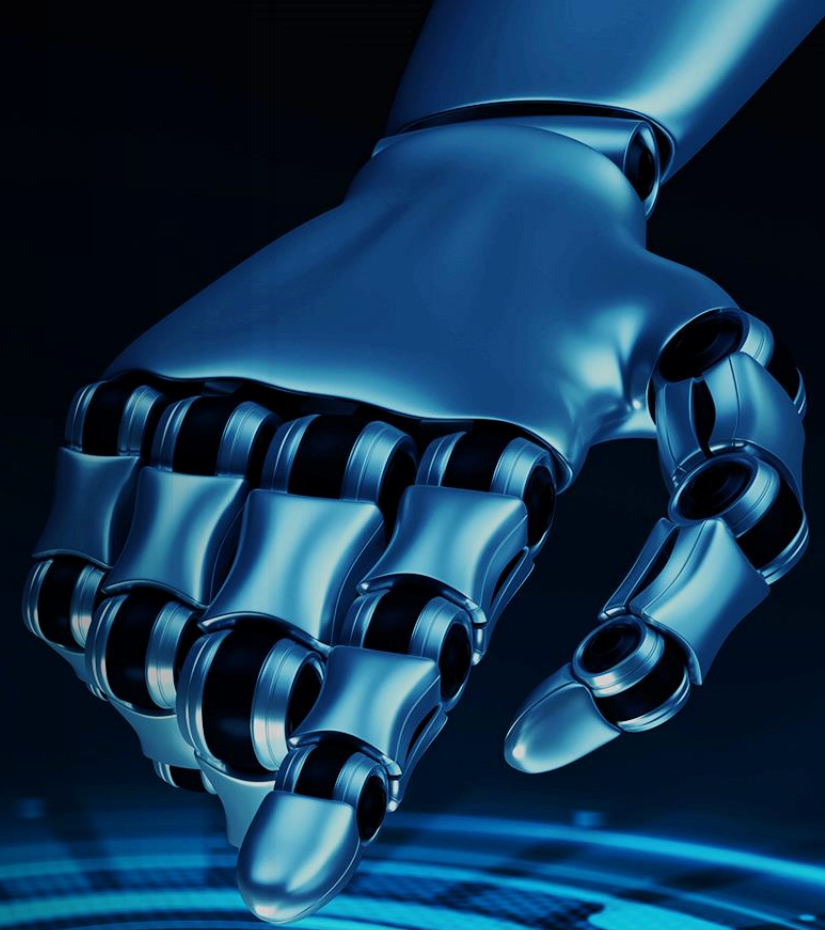




Organizations Need to Do More  
with the Tools They Already Have

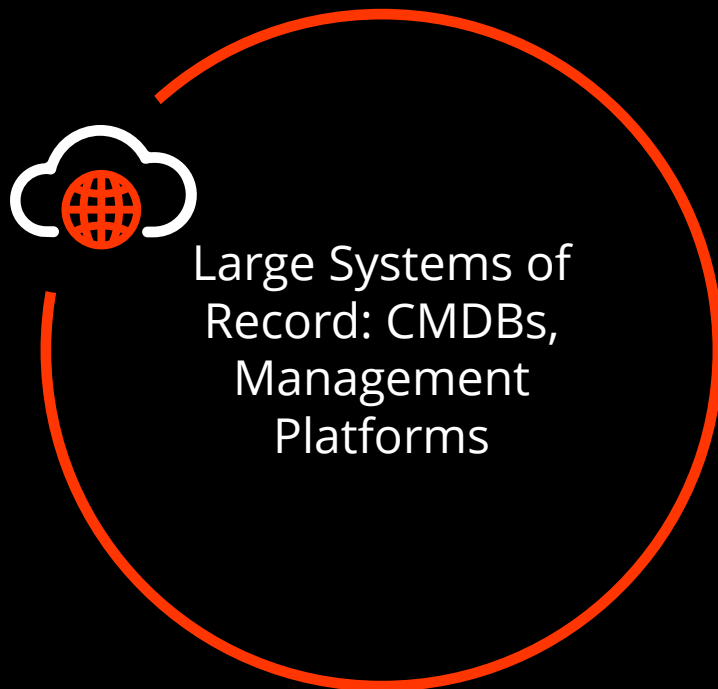


# readyworks

- SaaS Platform that provides: **System Integration, Data Intelligence, and Workflow Automation**
- Strong, referenceable track record in the global financial services vertical
- Is an industry-agnostic platform with limitless applications, making it easily adaptable.
- Market thought leader in the rapidly growing Digital Platform Conductor space
- Recognized by Gartner as a 2023 innovator in six industry categories:
  - Monitoring, Observability, and Cloud Operations
  - IT Service Management
  - I&O Automation
  - Agile & DevOps
  - I&O Digital Workspace Transformation
  - Data Center Infrastructure Technologies

# Organizations Need to Do More **with** **the Tools They Already Have**

**Enterprises have made strategic investments in an ecosystem of IT systems, vendor platforms, and internally developed solutions.**

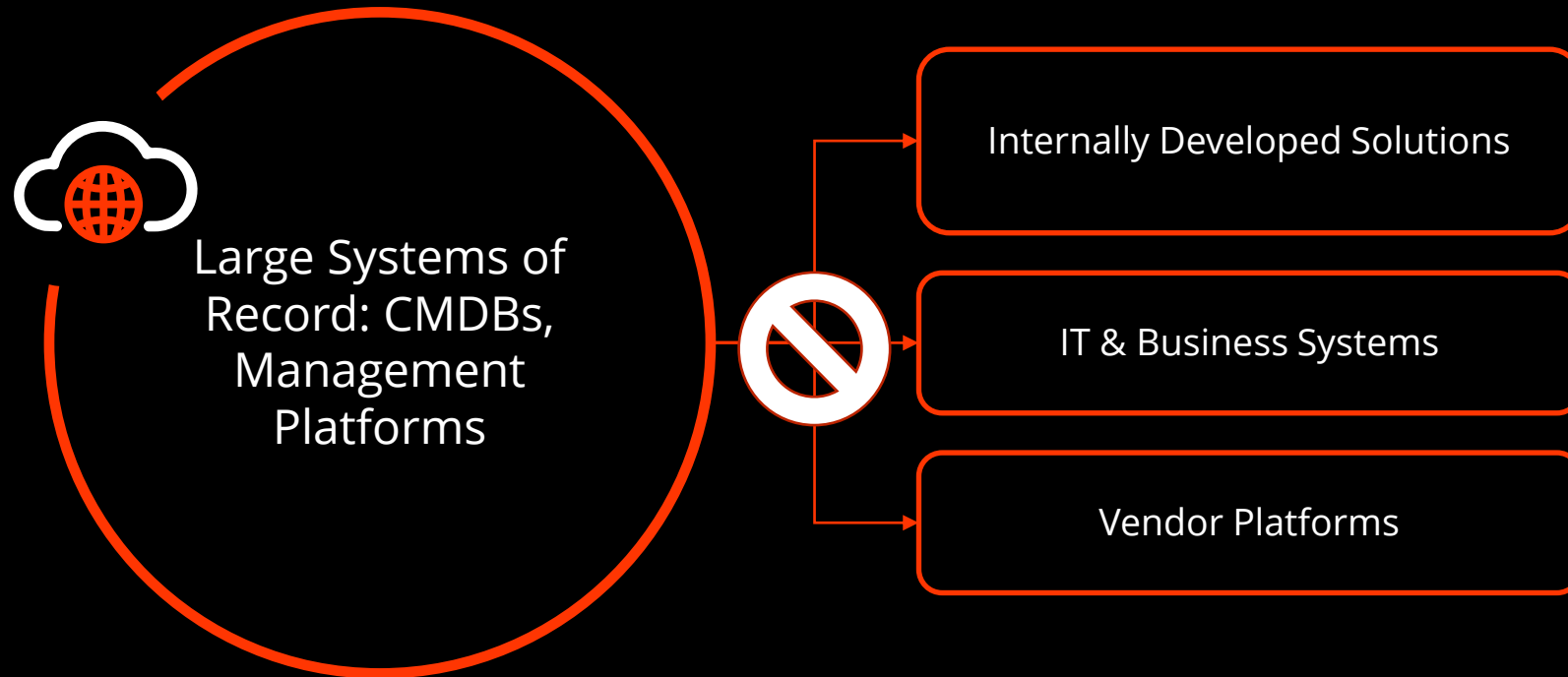


Internally Developed Solutions

IT & Business Systems

Vendor Platforms

# Unfortunately, Most of These Systems Don't Work Together



# This Introduces Massive **Risk & Inefficiency**



## **Blind Spots =**

high levels of risk for the business and inadequately informed decision making



## **Manual Processes =**

substantial waste in the form of program overruns, misallocated resources, and unnecessary spending



## **Unrealized ROI =**

Teams are unable to leverage all of an organization's technology investments

# Systems Don't Work Together Because Integration is Expensive & Complicated

Requires Developers,  
ETL Specialists, and  
Data Experts

Time Consuming with  
Risky Outcomes

Incurs Technical Debt  
&  
Never Ending Support

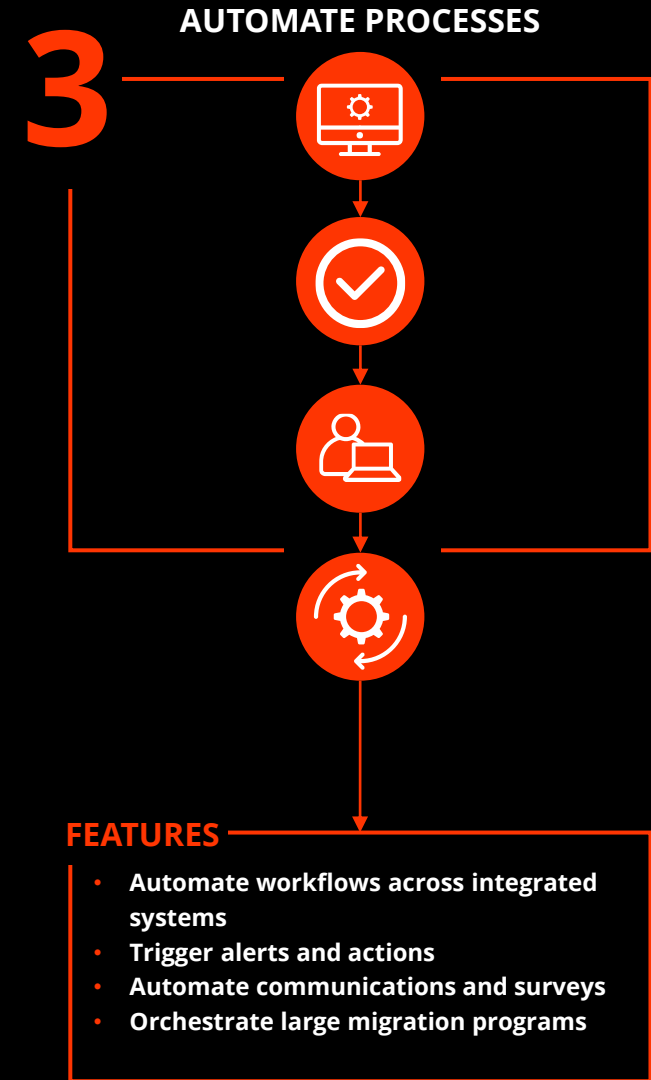
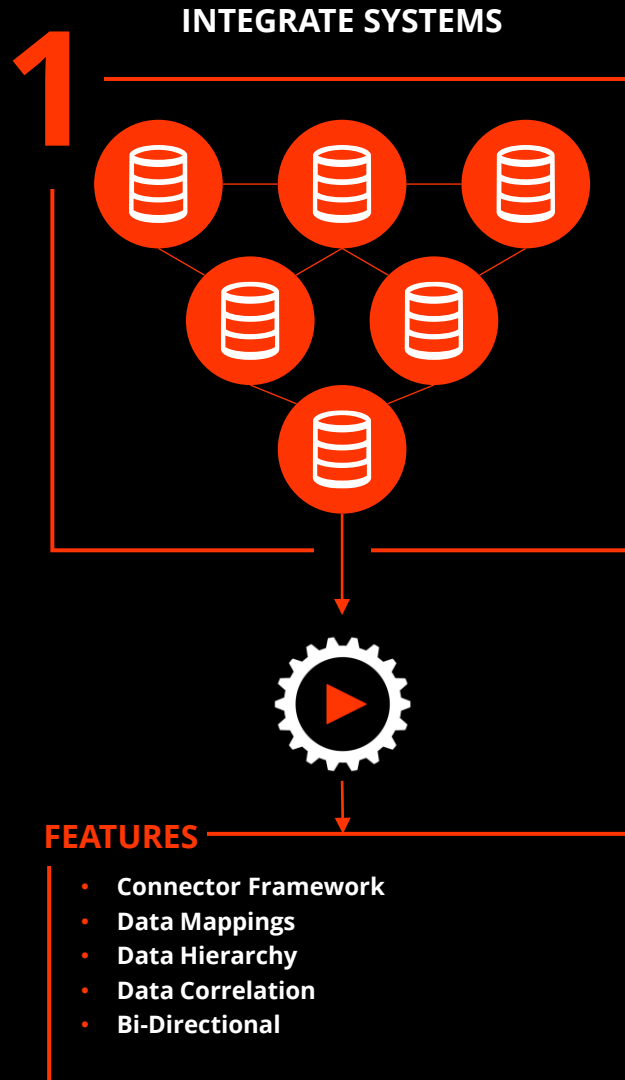
# System Integration, Data Intelligence, & Workflow Automation

## In One Platform



ReadyWorks **Makes Everything Work Together**

# What We Do



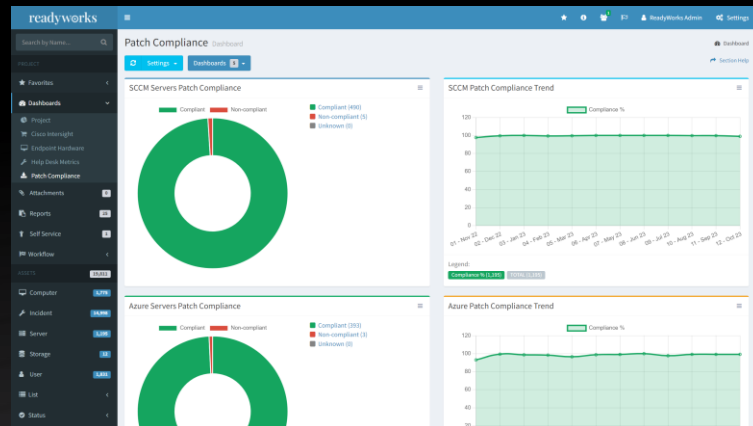
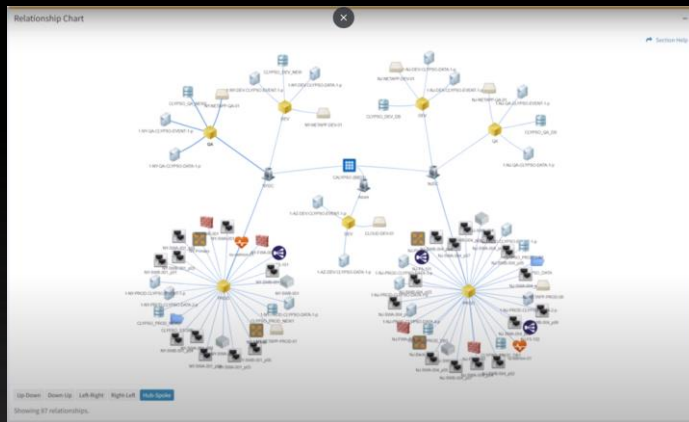


# ReadyWorks is Fully Customizable (Low Code/No Code)



View Report: Application Migration Estimate

Name	Risk Score	Risk	Value Score	Value	Effort Score	Effort	Users	Licenses	Owner	In Scope
1-2 Supply (27026)	0	Low	0	No Value	0	0	0	0	Angela Oliver	NO
3-5 Supply (27026)	0	Low	50	High Value	32	0	0	0	Demetrius Swanson	YES
ABC (2962)	0	Low	200	High Value	32	0	0	0	Don Powell	YES
Account (30001)	60	High	0	No Value	33	0	0	0	Nancy Welch	YES
Activity (14342)	60	High	50	High Value	43	0	0	0	Green Bloor	YES
Admin Console (18126)	30	Low	0	No Value	33	0	0	0	Demetrius Swanson	YES
Admin Console Extension (24124)	100	High	0	No Value	42	0	0	0	Don Powell	YES
Admin Sync (10276)	30	Low	75	High Value	41	0	0	0	Conroy Swanson	YES
AdminSign (20231)	30	Low	25	Low Value	42	0	0	0	Justin Grant	YES
ADP Payroll (24554)	100	High	50	High Value	42	0	0	0	Green Bloor	YES



Pure Capacity

Pure Capacity Report

Array Name	Used %	Free %	Usable (TB)	Used (TB)	Free (TB)	System (TB)	Unique (TB)	Shared (TB)	Snapshots (TB)	# Snapshots	Subscribed (TB)	Subtotal
PURE01	36.00	64.00	98.11	62.77	35.34	0.00	24.60	9.31	1.40	5112	537.65	588.00
PURE02	35.40	64.60	181.73	65.04	116.69	0.00	78.66	14.62	7.41	4571	1034.01	588.00
PURE03	37.40	62.60	329.05	126.45	202.60	0.00	103.40	48.43	5.37	2391	1172.11	336.00
PURE04	0.00	100.00	247.65	247.65	0.00	0.00	0.00	0.00	0.00	0	0.00	0.00
PURE04	0.00	100.00	49.77	49.77	0.00	0.00	0.00	0.00	0.00	0	0.00	0.00
PURE06	44.00	56.00	329.05	144.49	184.56	0.00	106.96	27.92	10.20	9461	2044.72	630.00
PURE07	0.00	100.00	247.65	247.65	0.00	0.00	0.00	0.00	0.00	0	0.00	0.00
PURE08	60.00	40.00	181.73	110.44	71.29	103.44	0.00	3.66	41.88	6480	553.42	234.00
PURE09	35.40	64.60	329.05	116.17	212.88	0.00	115	142.07	27.26	5511	932.61	277.00

System Integration – Data Intelligence – Workflow Automation

# Prepare for AI Integration **with ReadyWorks**

**ReadyWorks** is investing to solve the AI-integration challenge for our customers!

We want them to be first to leverage **dramatic cost-reductions** and gain a market advantage through super-charged product and service delivery.

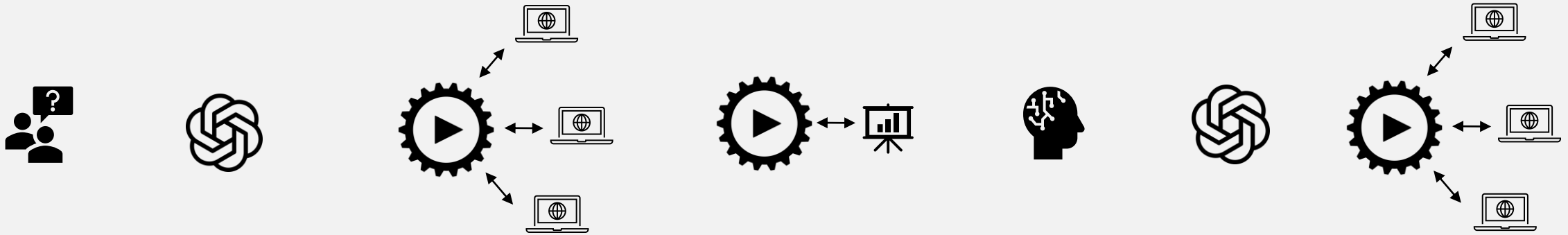
By extending our approach of **seamless integration and flexibility** we will incorporate LLM capabilities alongside customers' existing systems so they can **harness the power of AI** for their business using:

**AI-Fueled Data  
Searches**

**More Intuitive  
Automated  
Workflow Creation**

**Faster Problem-  
Solving with Even  
Greater Precision**

# ReadyWorksAI



**ReadyWorksAI** is an LLM powered operational framework used to orchestrate reporting and workflows across disparate teams and systems

# How it Works



The operator enters a query in natural language through the RW AI interface

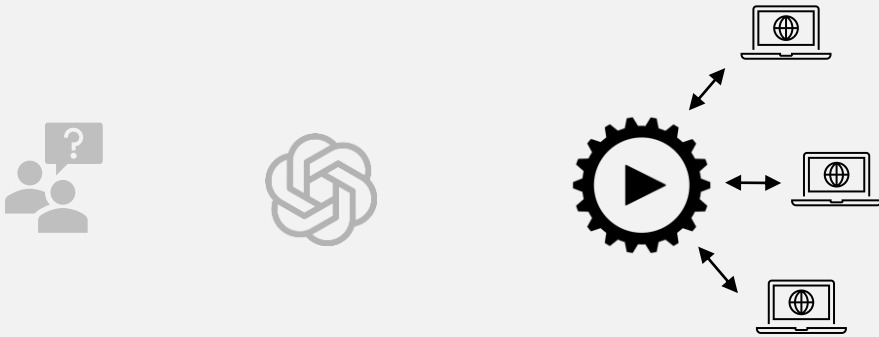
**Example:** "Show me all servers in use by project team X"

# How it Works



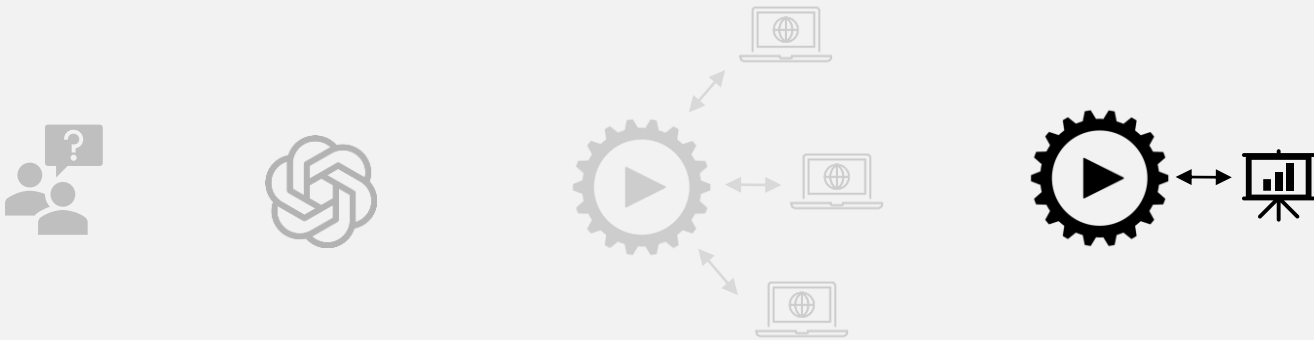
The LLM translates the natural language into code which ReadyWorks understands

# How it Works



ReadyWorks uses the code to analyze data which has been previously collected, cleaned, and correlated from relevant source systems

# How it Works



ReadyWorks presents the analyzed response via the native report/chart builder

**Example:** "The following 97 servers are being utilized by Project X"

# How it Works



Using the data, workflows are executed either manually, automatically, or based on LLM recommendation

**Example:** "Email this report to Project X stakeholders every Friday at 12:00PM"



# How it Works



The workflow request is translated from natural language into code readable by ReadyWorks

# How it Works



ReadyWorks executes the workflow including bi-directional API calls, system authentication, human approvals, scheduling, communications, audit logging, data quality verification, and error handling

# AI-powered Data Intelligence Executive Summary Example

The screenshot displays the Readyworks AI Report Builder interface. On the left is a dark sidebar with navigation options: PROJECT (Dashboards, Attachments, Reports, Workflow), ASSETS (Cloud Project Packs, Part, Server, Storage, End User Device, Infrastructure, Printers, Virtual Machines, Cabinet, Ticket), and counts for each. The main area is titled 'AI Report Builder' and shows a chat interface where the user has asked 'Give me the servers executive summary'. The AI has responded with an 'Executive Server Asset Count Report'.

**Executive Server Asset Count Report:**

As part of our ongoing efforts to optimize operational efficiency and reduce costs, we have conducted a comprehensive count of our server assets. The results are summarized below.

**Total Count of Assets: 72**

**Breakdown by Status:**

- **Ready for Disposal: 12 (16.67%)**
  - This category includes servers that are no longer needed or are obsolete and can be safely decommissioned.
- **Ready for Disposal - In Progress: 3 (4.17%)**
  - These servers are in the process of being decommissioned, but have not yet been fully removed from service.
- **Marked for Disposal: 2 (2.78%)**
  - This category includes servers that are scheduled to be decommissioned in the near future.
- **Disposed: 51 (70.83%)**
  - These servers have already been decommissioned and disposed of, freeing up resources and reducing maintenance costs.
- **In Use: 2 (2.78%)**
  - These servers are currently being used for critical business operations and will continue to be maintained until they reach the end of their life cycle

At the bottom of the chat window, there is a 'Stop responding' button.

# AI-powered Data Intelligence

## Executive Summary Example - Continued

The screenshot displays the Readyworks AI Report Builder interface. The left sidebar contains navigation options for PROJECT (Dashboards, Attachments, Reports, Workflow) and ASSETS (Cloud Project Packs, Part, Server, Storage, End User Device, Infrastructure, Printers, Virtual Machines, Cabinet, Ticket). The main content area shows the 'AI Report Builder' with a search bar and a 'Send' button. The report content includes a summary of server assets categorized by status, key findings, and recommendations.

**Report Properties**

Give me the servers executive summary

**Disposed:** 51 (70.83%)

- These servers have already been decommissioned and disposed of, freeing up resources and reducing maintenance costs.

**In Use:** 2 (2.78%)

- These servers are currently being used for critical business operations and will continue to be maintained until they reach the end of their life cycle.

**None:** 2 (2.78%)

- This category includes servers that are no longer in use or have been retired from service.

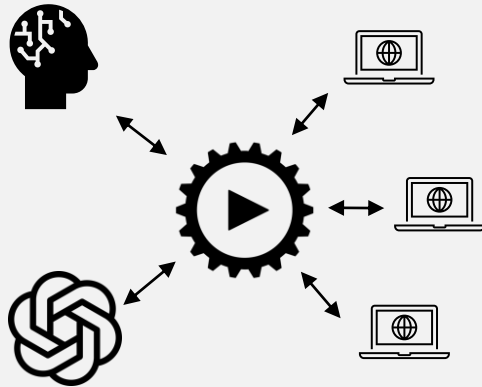
**Key Findings:**

- The majority of our server assets (70.83%) have already been disposed of, indicating a high level of asset turnover and optimization.
- A significant proportion of our remaining assets (16.67%) are ready for disposal, suggesting opportunities for further cost savings and resource reallocation.
- The number of servers in use is relatively low (2.78%), indicating that we may be able to reduce our overall server count through consolidation or virtualization.

**Recommendations:**

- Prioritize Decommissioning:** Focus on decommissioning the remaining assets marked for disposal, taking care to properly recycle and dispose of any hardware.
- Optimize Server Utilization:** Identify opportunities to consolidate or virtualize servers in use, reducing the overall server count and associated maintenance costs.
- Continuously Monitor and Update:** Regularly review our server asset inventory to ensure that it remains accurate and up-to-date, identifying opportunities for further optimization and cost savings.

# Summary



- ReadyWorks is the central point of interaction between human operators, LLMs, end users, and the systems that run the business
- ReadyWorks manages system authentication, API integration, audit logging, error handling, data collection, and data cleansing
- ReadyWorks provides the UI and capability to build and review workflows, reports, and analytics

**THANK YOU**

[www.ReadyWorks.com](http://www.ReadyWorks.com)